



ADAMA

Trivor®

A flexible option for the control of light brown apple moth, grapevine scale and long-tailed mealybug in grapes.

## Light brown apple moth

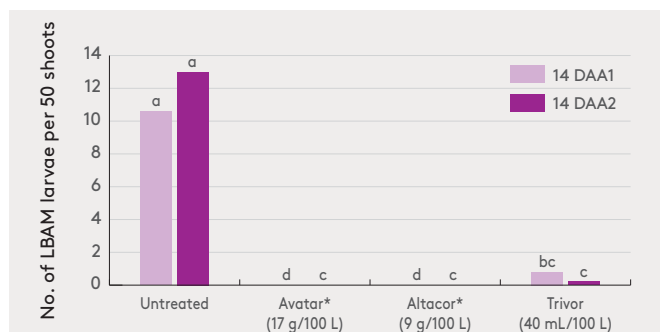
(400-800 mL/ha)

Apply as part of a monitoring and management program commencing 140 degree-days after light brown apple moth is detected in traps. Trivor should be applied as a dilute (high volume) spray to point of run-off to target pre-flowering infestations. If concentrate spraying, ensure suitable equipment is used to achieve coverage of foliage and developing bunches. Following Trivor application, continue to monitor crops for light brown apple moth and apply additional insecticide applications on a 7–14 day spray interval from flowering through to bunch closure. Rotate to another mode of action, such as Group 6 (Oracle®) or Group 18 (Venturi® MAX), according to label directions.

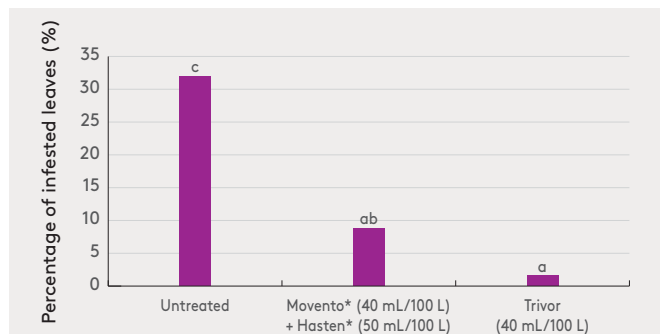
## Grapevine scale and long-tailed mealybug

(400-800 mL/ha)

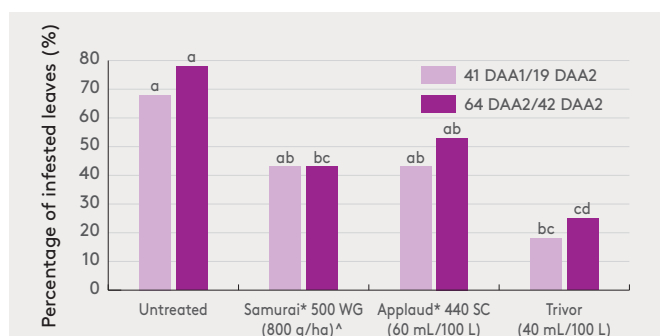
Apply Trivor when crop monitoring indicates the onset of crawler release from overwintering adults. For best results, target Trivor on the first generation of active crawlers following budburst when good coverage can be achieved. Do not target Trivor applications on populations that are well-established where mature adult insects dominate the population. Apply Trivor as a dilute (high volume) spray to the point of run-off, ensuring thorough coverage. Concentrate spraying is not recommended when targeting grapevine scale and/or mealybug as thorough coverage is critical for control. Continue to monitor crops and if additional treatments are required, apply an insecticide from a different mode of action group after a minimum spray interval of 21 days.



**Figure 1: Incidence of light brown apple moth in shoots.** (Trial ID: AD-AU-16-101-05, Yering, Victoria, 2015/16. Grapes, cv. Chardonnay. DAA = Days after application. \*Agral adjuvant.)



**Figure 2: Incidence of grapevine scale on leaves (21 DAA).** (Trial ID: AD-AU-18-112-8, Nangiloc, Victoria, 2018/19. Grapes, cv. Riesling. DAA = Days after application.)



**Figure 3: Incidence of long-tailed mealybug on leaves.** (Trial ID: AD-AU-15-102-03, Bream Creek, Tasmania, 2015. Grapes, cv. Riesling. DAA = Days after application. ^Applied as soil drench @ 500 L water/ha.)



INSECTICIDE

# Trivor®

## Mixing

Trivor is a dispersible concentrate (DC) formulation. It is added to the spray tank after any water dispersible granular (WG) or suspension concentrate (SC) formulations and before any emulsifiable concentrate (EC) or soluble liquid concentrate (SL) formulations.

## Application window

Trivor can be applied up to E-L 19 for export wine production and E-L 31 for domestic wine production. For table grape production Trivor can be applied up to E-L 25. Apply a maximum of two applications of Trivor per season and in rotation with an insecticide from a different mode of action group.

## Compatibility

Trivor is compatible with the following crop protection products and fertilisers:

Biopest\* Oil  
Chief® Aquaflo  
Copper Oxychloride  
Champ 500 WG Fungicide  
Tri-Base Blue Fungicide  
Mancozeb  
Mirador® 625  
Custodia® Forte  
Solaris®  
YaraVita Twin Zinc\*  
YaraVita Mantrac Pro\*  
YaraVita Coptrel 500\*  
Spraygro\* Smart Trace Zinc

## Spray volume

Apply as a dilute (high volume) spray to the point of run-off, ensuring thorough coverage. Thorough coverage is required for control. Do not use concentrate spraying when targeting mealybug and scale. Dilute or concentrate spraying can be used when targeting LBAM, provided coverage is sufficient.

## At a glance

- ✓ Flexible option for the control of key insect pests in wine and table grapes, including light brown apple moth, grapevine scale and long tailed mealybug.
- ✓ Combines two insecticide modes of action to provide knockdown plus residual control and good resistance management.
- ✓ Highly compatible dispersible concentrate formulation with excellent crop safety.
- ✓ No additional adjuvants required.
- ✓ Locally-developed to meet the needs of Australian grape growers and Australian conditions.

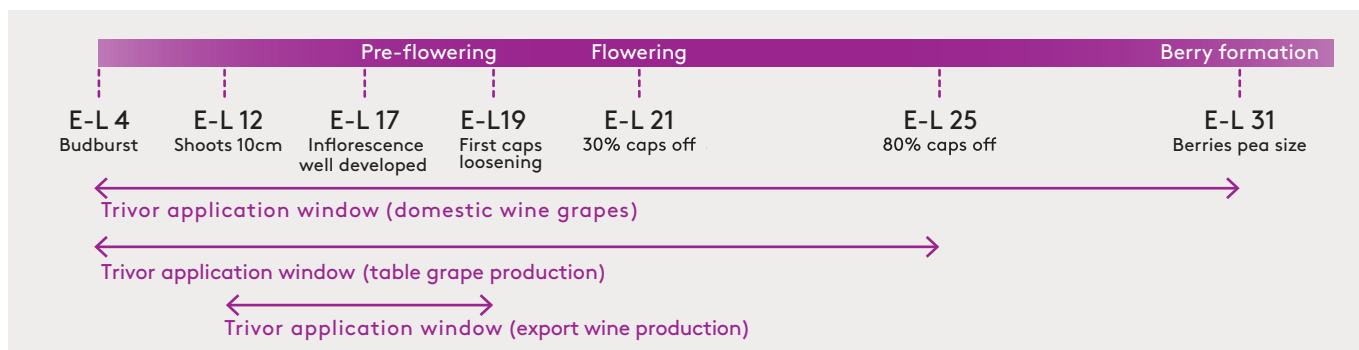
## Withholding periods

**Wine and table grapes:** Not required when used as directed.

**Grazing:** DO NOT graze or cut treated area for stockfood.

## Export trade advice

Fruit or wine destined for export may require extra time between application and harvest to be accepted in some export markets. Before using Trivor on crops destined for export, consult your exporter, AWRI Dog Book or ADAMA to ensure that an appropriate MRL is in place in the importing country.



Scan here for more information

©Registered trademarks of an ADAMA Agricultural Solutions Ltd Company.  
\*Registered trademarks. Please note: This information is not intended to replace the product label.  
Always read the complete product label appearing on the container before opening or using products. ADA21097



INSECTICIDE

ADAMA.COM

1800 4 ADAMA

