



ADAMA

Cotton Solutions

1800 4 ADAMA

info.au@adama.com

ADAMA.com

 [@AdamaAust](https://www.facebook.com/AdamaAust)

 [@Adama_AU](https://twitter.com/Adama_AU)

 [@adama_aus](https://www.instagram.com/adama_aus)

 [@adamaaustralia](https://www.linkedin.com/company/adamaaustralia)



ADAMA

Skope[®]

**Excellent performance
on key pests including
Silverleaf Whitefly
and Green Mirid with
flexible use timings.**

- Choosing Skope insecticide gives you excellent performance against key cotton pests, including Green Mirid, Silverleaf Whitefly, Heliothis spp, Cotton Aphid and Green Vegetable Bug
- With two modes of action, IPM fit and no mite flaring, Skope makes no compromises when managing multi-pest scenarios in Bollgard* cotton.



ADAMA.COM

©Registered trademarks of an ADAMA Agricultural Solutions Company.




INSECTICIDE



Scan here for
more information

Insecticide Usage Guide

 Product	Formulation Type	MOA	Heliothis	Thrips	Green Mirid	Mites	GVB	SLWF	Aphids	Wireworm & False Wireworm	Apple Dimpling Bug	Jassids
ALBATROSS® fipronil 200 g/L	SC	2B		▲	▲							
ALPHA SCUD® 300 alpha cypermethrin 300 g/L	SC	3A	▲		▲						▲	
APHIDEX® 800 pirimicarb 800 g/kg	WG	1A							▲			
DIMETHOATE dimethoate 400 g/L	EC	1B		▲	▲	▲	▲		▲		▲	▲
ELECTRA® 225 methomyl 225 g/L	EC	1A	▲									
ELECTRA® 900 methomyl 900 g/L	WG	1A	▲									
LASCAR® pyriproxifen 100 g/L	EC	7C						▲				
PRIMAL® acetamiprid 200 g/L	SL	4A			▲		▲	▲	▲			▲
RECEPTOR® diafenthiuron 500 g/L	SC	12A				▲		S	▲			
SKOPE® acetamiprid 218 g/L emamectin 32.5 g/L	DC	4A / 6	▲		▲	S	▲	▲	▲			▲
VENOM® 240 bifenthrin 240 g/L	SC	3A	▲		▲	▲		▲		▲	▲	
WARLOCK® emamectin 17 g/L	EC	6	▲		S	S						
WIZARD® 36 abamectin 36 g/L	EC	6	▲			▲						

S Suppression **▲** Control MOA: Mode of Action GVB: Green Vegetable Bug SLWF: Silverleaf Whitefly

Skope®

SKOPE® is a unique insecticide ideal for managing multi pest scenarios in cotton crops. It combines two powerful active ingredients to provide effective and versatile control of key sucking and chewing pests.

- Contains acetamiprid 218 g/L + emamectin 32.5 g/L in a DC formulation
- Highly suitable for mid and late season applications where multiple pests are present
- Moderate impact on beneficials
- Will not flare mites and aphids
- Ability to control up to moderate infestations of Silverleaf Whitefly
- SKOPE® has an excellent fit in both Bollgard® III and conventional cotton crops



Green Mirid



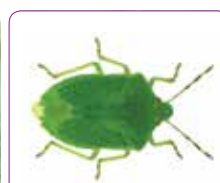
Silverleaf Whitefly



Helicoverpa. spp.



Cotton Aphid



Green Vegetable Bug



Two spotted mite

Skope® controls the key insect pests of cotton (Two spotted mite is suppression only).

Primal®

- Silverleaf Whitefly added to the label at 225 to 380 ml/ha
- Green Vegetable Bug and Jassids added to the label at 380 ml/ha
- Mirids rate increased 225 to 380 ml/ha
- Provides excellent control of cotton aphid
- Excellent option for multi-sucking insect pest control

Lascar®

- Excellent "Soft" insecticide for the control of Silverleaf Whitefly
- Rated "Very Low" for impact on beneficial insects
- Offers translaminar activity
- Group 7C Insecticide – Insect growth regulator
- Acts by inhibiting adult development from nymphs, and inhibits egg lay and egg hatch

Wizard® 36

- Proven efficacy on Two Spotted Mite
- Fast acting knockdown and residual activity
- Double strength formulation for ease of handling

Receptor®

- Effective knockdown insecticide for the control of Two Spotted Mite, Cotton Aphid and suppression of Silverleaf Whitefly
- Rated "Low" for impact on beneficial insects
- Group 12A Insecticide
- Offers both translaminar and fumigant type activity



ADAMA

Receptor[®] insecticide

Give insect pests an
unwelcome reception.

Receptor is a pro-insecticide
that provides highly
effective control of key
insect pests in cotton.

- Controls Two Spotted Mite and Cotton Aphid, and suppresses Silverleaf Whitefly.
- Translaminar movement and vapour activity
- Target pests are immediately paralysed
- Knockdown and residual activity (7–14 days)
- Minimal impact on beneficials



Scan here for
more information



INSECTICIDE

[ADAMA.COM](https://www.adama.com)



©Registered trademark of an ADAMA Agricultural Solutions Ltd Company. ADA24271.

Herbicide Usage Guide

 Product	Formulation Type	HRAC# MOA Classification	Broadleaf Weeds	Grass Weeds
BRONCO® 400 400 g/L bromoxynil	EC	6	▲	
DIURON 900 WG 900 g/kg diuron	WG	5	▲	▲
ELEVATE® 400 g/L carfentrazone-ethyl	EC	14	▲	
FIREPOWER® 900 900 g/L haloxyfop	EC	1		▲
MENTOR® WG 750 g/kg metribuzin	WG	5	▲	▲
MONSOON® 300 g/L bromoxynil + 150 g/L fluroxypyr	EC	6/4	▲	
PLATINUM® XTRA 360 360 g/L clethodim	EC	1		▲
SIERRA® 160 g/L saflufenacil	SL	14	▲	
SHOGUN® 100 g/L propaquizafop	EC	1		▲
SPRAYTOP® 250* 250 g/L paraquat	SL	22	▲	▲
SPRAYTOP® 330 330 g/L paraquat	SL	22	▲	▲

HRAC - Herbicide Resistance Action Committee. * Available through indent orders

Volunteer Conventional and Roundup Ready* Cotton Control

Product	Weeds Controlled	Weed Stage	State	Rate/Ha
BRONCO® 400 400 g/L bromoxynil	Volunteer Conventional Cotton	Cotyledon to 6 leaves	QLD, NSW, WA, NT only	750mL alone or 500-750mL PLUS Wipe-Out®
	Volunteer Roundup Ready* Cotton			750mL alone or PLUS Wipe-Out®
ELEVATE® 400 g/L carfentrazone-ethyl	Volunteer Conventional Cotton	2-6 LEAF STAGE	QLD, NSW, WA only	45 - 60 mL plus a paraffinic oil adjuvant or Hasten* 1% v/v.
	Volunteer Roundup Ready* Cotton			Or 45 - 60 mL plus Wipe-Out® 450 plus a paraffinic oil adjuvant or Hasten* 0.5% v/v
MONSOON® 300 g/L bromoxynil + 150 g/L fluroxypyr	Volunteer Roundup Ready* Cotton	Cotyledon to 6 leaves	All States	1L alone or PLUS Wipe-Out®
SIERRA® 160 g/L saflufenacil	Various broadleaf weeds including Volunteer Conventional and Roundup Ready* Cotton	6-10 leaf	All States	75 - 150 mL/ha plus a blended methylated/ ethylated seed oil at 1% e.g. Hasten*, Plantocrop* or Kwickin*

Pigeon Pea Refuge Crops

Product	Pre-Planting	At Planting (Pre-Emergence)	Post-Emergence
ELEVATE® 400 g/L carfentrazone-ethyl	▲	▲	
SPRAYTOP® 250* 250 g/L paraquat	▲	▲	
SPRAYTOP® 330 330 g/L paraquat	▲	▲	
MENTOR® 750 g/kg metribuzin		▲	
FIREPOWER® 900 900 g/L haloxyfop			▲ #
PLATINUM® XTRA 360 360 g/L clethodim			▲ #

Under Permit. * Available through indent orders



ADAMA



RX-380™

Cotton Growth Regulator

The super concentrate.

ADAMA RX-380™ is a highly concentrated formulation of the cotton growth regulator, mepiquat chloride.

- 10x concentration of standard formulations (380 g/L mepiquat chloride)
- New 15 L pack significantly reduces handling, transport and storage
- Soluble concentrate (SL) formulation
- Compatible with a wide range of ADAMA products



Scan here for more information



**GROWTH
REGULATOR**

ADAMA.COM



™Trademark of an ADAMA Agricultural Solutions Ltd Company. ADA25350.



ADAMA

Spray Drift Awareness

1	What product am I spraying? Could it harm sensitive crops?	
2	Check satacrop.com.au and talk to your neighbours about sensitive crops growing in your area	
3	Is there a hazardous inversion? If so, STOP. Know the signs and check the WAND weather app if available in your area	
4	Use the coarsest spray quality possible while maintaining efficacy. Always follow the recommendations on the label	
5	Avoid using adjuvants that decrease droplet size and increase drift risk	
6	Keep the boom low and travel slow	
7	Always monitor the wind speed and direction	
8	Stop if something is not right!	

Correct Mixing Order

Step 1	Fill the spray tank to at least 70% full. Commence agitation	
Step 2	Add any water conditioners Ammonium Sulphate or LI 700*	
Step 3	Add any Wettable powders (WP) e.g. Axiom® Flexi	
Step 4	Add any Water Dispersible/Soluble Granules (WG/WDG/DF/SG) e.g. Diuron® WG, Ultro® WG or Folpan® 800 WG	
Step 5	Allow sufficient time for any granular products to completely disperse	
Step 6	Add any Suspension Concentrate (SC) products e.g. Alpha-Scud® 300, Priority®, Veritas® Opti or Ateka®	
Step 7	Add any Dispersible concentrate (DC) products e.g. Trivor® or Skope®	
Step 8	Add any Suspo-emulsion (SE) e.g. Topnotch® or Emulsifiable Concentrate (EC) products e.g. Marathon®, Maxentis® Opti, Proviso® Opti, Quadrant®, Triathlon®, Trilogy®	
Step 9	Add any Emulsion Oil in Water (EW) products e.g. Mavrik®	
Step 10	Fill the spray tank to nearly full	
Step 11	Add any Soluble Liquid (SL) products (including Aqueous Concentrate (AC) products) e.g. Picoflex® 430, Zulu® XT, MCPA 750	
Step 12	Add any SL glyphosate products e.g. Wipe-Out® Pro or paraquat products e.g. Spraytop® 330	
Step 13	Add any Oil Dispersion (OD) products	
Step 14	Add adjuvants e.g. BS1000* and Oils e.g. Uptake* or Hasten* last and fill the tank.	

®Registered Trademark of an ADAMA Agricultural Solutions Company. *Registered trademarks. Always check labels of all products to be used for manufacturer's tank mix recommendations. Seek competent advice or perform a jar test if unsure before proceeding. The physical and chemical properties of various manufacturer's formulations may differ. Recommendations for use, handling, storage and disposal of products may also change over time. Please note: This information is not intended to replace the product labels. Always read the complete product label appearing on the container before opening or using products. Product labels also available on adama.com. Updated May 2026



ADAMA

ADAMA Australia Pty Ltd.

Phone: (02) 9431 7800

Fax: (02) 9431 7700

Level 1, Building B, 207 Pacific Hwy, St Leonards NSW 2065 Australia

For more information visit: **adama.com**

For Customer Enquiries: **1800 4 ADAMA**

ADAMA Australia provides the cotton industry with the broadest range of crop protection and management solutions. Solutions that are trusted, easy to use and perform in-field as promised. ADAMA Australia is a committed partner to Australian cotton production working together with the industry to develop solutions for current and emerging challenges.

© Registered trademarks of an ADAMA Agricultural Solutions Ltd Company. † Registered Trademarks. Please note: This information is not intended to replace the product labels. Always read the complete product label appearing on the container before opening or using products. Product labels also available on adama.com.

ADAMA Contacts

Commercial Enquiries

Balonne/Gwydir/MacIntyre – Sam Tweedy
m: 0457 575 955

Central QLD – Paul Kleinhanss
m: 0448 235 654

Darling Downs – Sam East
m: 0437 226 884

Northern Territory – Brett Hansen
m: 0429 448 315

MIA/Lachlan Valley – Al Wright
m: 0467 010 355

Macquarie Valley – Matt Winkel
m: 0447 600 613

Northern Regional Manager – Andrew Ryan
m: 0418 211 515

Technical Enquiries

Central QLD/NT – Brett Hansen
m: 0429 448 315

QLD/N-NSW – Jim O'Connor
m: 0428 718 189

NSW – Scott Wallace
m: 0458 900 164



Scan here to see our
Cotton portfolio