

Description

Apollo®50SC is a long residual contact acaricide, which is effective against eggs and first motile stages of Panonychus and Tetranychus mites in Roses, Strawberries & French Beans.

Mode of Action

Mite growth inhibitor.

Directions for use

Application Rate

Roses, Strawberries & french beans.

Use 70 ml of Apollo® 50SC per 100 Liters of water at first appearance of mite infestation or 700ml/ha Use 14ml in 20 liters of water.

Tank Mixtures:

If adult stages are present, it is advisable to tank-mix Apollo® 50 SC with an appropriate adulticide. 40 ml of Apollo® 50 SC may be mixed with 250 ml of amitraz (200g/l) in 100 litres of water.

Spray Preparation

Fill the spray tank half way with water, add the required measure of Apollo® 50 SC and mix thoroughly. Add the remaining amount of water to the spray tank and continue mixing by agitation. Ensure continuous agitation of the spray mixture throughout the spray period and avoid leaving the spray mixture to remain in the tank for a long period or overnight without agitation.

Spray Technique

It is important to ensure good coverage of the target crop is achieved by using a spray volume of 1000–1500 l per ha depending on crop canopy. Do not apply upwind and stay out of spray mist.

Compatibility

New tank mixtures should be tested on few plants prior to a large-scale use to ascertain crop safety. Apollo® 50 SC is NOT compatible with lime sulfur or Bordeaux mixture.

Pest resistance management

Apollo® 50 SC is particularly useful if application starts early in the season. In order to prevent, build up of resistance to Apollo® 50 SC, it is recommended not to apply this product more than twice per season. If a second application is needed, always mix Apollo® 50 SC with a miticide having a different mode of action.

Pre harvest interval

Strawberries: 3 days/ French beans 7 days.

Re-entry period

Green house: After the spray mixture has dried. Field: 6 hours.

Hazards and precautions

Handling

Wear protective gloves and face shield when handling the concentrate and protective gloves, overalls, impermeable boots and face shield when spraying. Avoid contact of spray mixture with skin, eyes and clothing. Do not smoke, drink or eat while handling the product.

After Work

Change the protective clothes and thoroughly wash hands and face with soap and water.

Carefully wash the spraying equipment and any contaminated clothing.

Storage

Store in the original tightly closed container in a locked pesticide store out of reach of children and unauthorized persons.

Disposal

Triple rinse, puncture or crush empty containers before disposal in a safe and authorized place in accordance with National regulations on chemical disposal. Do not re-use empty containers for any other purpose. Pesticide spray mixture or rinsate that cannot be used must be disposed where it cannot contaminate surface water and ditches. Do not re-use empty containers for any other purpose.

Wildlife and environmental protection

Apollo®50SC is toxic to fish. Do not contaminate ponds and waterways by direct application, cleaning of equipment, disposal of wastes and empty containers. A buffer zone of 3m should be observed.

First aid instructions

Apollo 50 SC is harmful if in contact or swallowed.

If inhaled: Remove the patient to fresh air.

If in contact with skin: Remove contaminated clothing and wash affected area thoroughly with soap and water.

If in contact with eye: Flush with water for at least 15 minutes and obtain immediate medical aid

If swallowed: Wash out mouth with water. Induce vomiting only if person is fully conscious. Seek immediate medical service.

Toxicological information

Apollo® 50 SC is unlikely to cause harm under normal use.

Treatment: There is no specific treatment. Treatment should be supportive and symptomatic after an appropriate decontamination.

In case of emergency call Toll free number:
0800720021/0800730030

Notice to users

This pest control product is to be used only in accordance with the directions on the label. It is an offence under the Pest Control Products Act to use or store a pest control product under unsafe conditions.

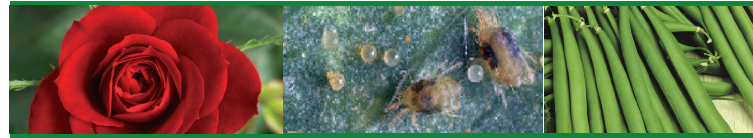
Warranty

Seller's guarantee is limited to the terms set out on the label and subject thereto, the buyer assumes the risk to persons or property arising from the use or handling of this product and accepts the product on that condition.



Apollo®

50 SC



A contact acaricide for residual control of eggs and motile stages of mites in roses & strawberry and eggs on french beans
(Kiuwa wadudu cha kuzuia mayai na viwavi za utitiri kwa Waridi, Stroberi na, Mishiri)

COMMERCIAL & AGRICULTURAL CLASS.
(KUNDI LA BIASHARA NA KILIMO.)
GUARANTEE (DHAMANA): Clofentazine.....500g/l
REGISTRATION NO. (NAMBARI YA USAJILI):
PCPB (CR)...0162

READ THE LABEL BEFORE USING
(SOMA KIBANDIKO KABLA YA KUTUMIA)

KEEP OUT OF REACH OF CHILDREN
(JUNJIA MBALI NA WATOTO)

In case of Emergency call toll free No.
(Wakati wa Dharura piga simu bila malipo-masaa 24):
0800720021 / 0800730030(24hrs)

Member Of
Agro Chemical
Association Of Kenya
Registration Number.
Aak 219



Warning (Ilani)
Very toxic to aquatic life,
may cause long term adverse effects
in the aquatic environment

Shelf life: 3 years from date of manufacture when stored in original unopened container in a cool dry place.
Maisha Rafuni: Miaka 3 baada ya kutengenezwa kama imewekwa kwenye chombo chake halisi hakijafunguliwa mahali pakavu pasipo na joto nyingi.

Mft date/Tarehe ya kutengenezwa:
Batch No./Nambari ya Kifurushi:
Expiry date/Tumia kabla ya:

Distributor / Wasambazaji:
Amiran Kenya Ltd.
Tel: 0719 095000
Fert@amirankenya.com
www.amirankenya.com



Manufacturer /Watengenezaji:
Adama Irvita N.V.

WHO CLASS III



Registrant /Msajili:
Adama Maakhteshim Ltd,
Israel

Net Contents / Ujazo

1Lt

Maelezo

Apollo® 50 SC ni dawa ya kuangamiza mayai na viwavi za aina nyingi ya utitiri ambazo hushambulia aina ya mimea ya mapambo, mishiri na "strawberries". Dawa hii huua kwa mguso na ina uwezo wa kukinga mimea dhidi ya utitiri kwa muda mrefu.

Mapendekezo ya matumizi

Kiwango cha matumizi

Waridi, Stroberi na Mishiri, Tumia mililita 70 za Apollo® 50 SC kwa lita 100 za maji wakati dalili za utitiri zimeonekana au mililita 700 kwa hekta. Tumia mililita 14 kwa lita 20 za maji.

Mchanganyiko wa Dawa

Iwapo mimea una dalili za karina ambazo zimekomaa, inapendekezwa uchanganyie Apollo 50 SC na dawa nyingine ambayo ina uwezo wa kuangamiza karina ambazo zimekomaa. Changanyia mililita 40 ya Apollo® 50 SC na mililita 250 ya "amitraz" (gramu 200 kwa lita) kwa lita 100 za maji.

Kutayarisha Dawa

Ongesa kiasi kinachohitajika cha Apollo® 50 SC kwa nusu kiasi cha maji kwa bomba kisha ukoroge vizuri. Ongesa kiasi cha maji kilichosalia na uendelea kutingisa bomba au kuchanganya dawa. Endelea kutingisa mchanganyiko wa dawa wakati unaponyuniza dawa na usiwache mchanganyiko wa dawa kwenye bomba kwa muda mrefu au usiku kucha.

Jinsi ya Kunyunyiza

Hakikisha mchanganyiko wa dawa na maji umetambazwa vizuri kwenye sehemu zote za mimea (matawi, matunda na kadhalika) kwa kutumia kiasi cha lita 1000 – 1500 cha maji kwa hektari kulingana na ukwaji wa mimea. Usivute mvuke wa dawa unaponyunyiza wala kunyunyiza mchanganyiko wa dawa na maji ukienda upandii upepo unatoka.

Upatanifu

Janibu kwenye vipukizi chache kwanza ili kuhakikisha hakuna madhara kwa mimea. Usichanganye Apollo® 50 SC na madawa ya aina ya "Sulphur" au "Bordeau Mixture".

Maelezo kwa mtumiaji

Apollo® 50 SC ina manufaa makubwa iwapo itatumwiwa mapema kwenye msimu. Hili kuzuia upunguwa wa nguvu wa dawa hii dhidi ya karina, ustumie Apollo® 50 SC zaidi ya mala mbili kwa msimu. Iwapo dawa hii itatumwiwa mala ya pili, changanya na dawa ya kuua karina ambayo hufanya kazi kwa njia tofauti.

Muda unapendekezwa kabla ya kuvuna

"Stroberi/Siku 3, Mishiri siku 7

Muda unapendekezwa kabla ya kuingia shambani palipo mnyunizwa

"Green house": Baada ya kukauka kwa mnyunizyo wa dawa. Shambani: Masaa 6 baada ya kunyunyiza.

Tahadhari

Matumizi

Vaa viziwi vya mikono na uso unapatayarisha dawa ya kunyunyiza na viziwi vya mikono na uso, "overalls" na viatu unaponyunyiza. Jihadhari na dawa au mchanganyiko wa kunyunyizi ausiguse ngozi, kuingia kwa macho au kumwagika nguo ulizovalia. Usivute sigara na usile wala kunywa wakati unapatumia dawa hii.

Kuhifadhi

Hifadhi dawa hii katika chombo chake asili ambacho kimefunikwa sawa sawa na kuwekwa kwenye ghalala la madawa lililodhinishwa. Ni lazima watoto na watu wasioruhuswa wakatazwe kuingia kwenye ghalala la madawa.

Utupaji

Safisha mkoba wa dawa iliyoisha kwa kusunza mara tatu kisha utoboe na utupilie au uzike mahali na maji ambapo ni salama na parapoidhinishwa kulingana na sheria za utupaji. Usitumie mkoba wa dawa kwa matumizi mengine yoyote. Mchanganyiko wa dawa ambao haujatumiwa au maji yaliyoisha vyombo ni lazima itupilwe mbali na maji, mahali ambapo ni salama na parapoidhinishwa.

Madhara kwa mazingira

Apollo® 50 SC ni sumu kwa samaki. Usichafue mazingira kwa kunyunyiza, kumwaga mabaki ya dawa, kutupa au kusunza mkoba wa dawa kwa mto, visima au vidimbvi.

Maelezo ya huduma ya kwanza

Apollo® 50 SC inadhuru ikigusa ngozi au ikimezwa. Iwapo madhara ya dawa hii itatokea, MPELEKE NJERUHI KWA DAKTARI.

Ikipumuliwa: Pumzisha mgonjwa mahali penye hewa safi.

Kimwagikia gozi: Ua ngozi zilizomwagikiwa na dawa na usafishe sehemu iliyomwagikiwa kwa maji na sabuni.

Ikgusa macho: Yasafishe macho kwa maji yanayotrinka kwa muda wa dakika 15 na upate matibabu ya haraka.

Ikimezwa: Osha mdomo na maji na ujibu kumtupisha ikwa mgonjwa anafahamu kamili. Pata ushauri wa daktari mara moja.

Maelezo kuhusu sumu

Apollo® 50 SC haiwezi kudhuru binadamu kwa matumizi ya kawaida.

Tiba

Hakuna dawa maalum inayovunja sumu. Tibu kuligana na dalili za kusumika.

Wakati wa dharura piga simu bila malipo (masaa 24)
0800720021/0800730030

Ilani kwa mtumiaji

Dawa hii sharti itumie kulingana na maagizo yaliyo kwenye kibandiko. Ni hatia chini ya sheria za madawa ya kuangamiza wadudu waharibifu kutumia au kuhifadhi dawa hii katika hali isiyosalama.

Thibitisho

Dhamana ya muuzaji ni maelezo yaliyo kwenye kibandiko ambayo ni lazima yafuatwe kikamilifu. Mnuuzi lazima akubali hatari zoote zinazoweza kutokana na matumizi ya dawa hii kwa binadamu au mali na lazima akubali dawa hii katika hali hiyo.

