

MAVRIK® AQUAFLO Insecticide

Taking care of the bad guys.
And the good guys.



**NEW
INSECTICIDE
FOR FODDER
BEET**

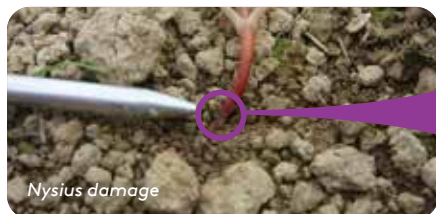
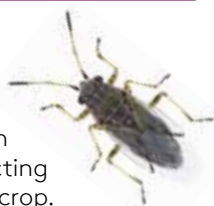
Your powerful, yet gentle insecticide for Nysius and cutworm control in fodder beet

There can be huge damage to plants if Nysius and cutworm are not well controlled. Beet seedlings at the post-emergence stage are particularly at risk from these pests.

Nysius

Unchecked, Nysius feeding damage to the base of the plants can destroy a high percentage of the crop, massively impacting farmers relying on their high-value beet crop.

Nysius are found where vegetation is sparse and sunlight falls directly on the ground, making seedlings especially susceptible. They thrive under hot, dry conditions. Adult Nysius hide under clods or debris on the ground when the temperature begins to fall in the evening and become active in the morning when the temperature rises.



Nysius damage

Cutworm

After hatching, young cutworm caterpillars forage on leaves until they are about one third grown. Larger cutworm caterpillars lie curled up 25-50 mm below the soil surface during the day and emerge at night to feed. Larger cutworm caterpillars are also the most damaging, cutting seedlings off at their base.



WHY MAVRIK AQUAFLO?

- Provides powerful control of Nysius and cutworm
- Unique chemistry with low toxicity to beneficials
- Completely crop-safe at beet seedling stage



Beet seedlings

Potent control and gentle on beneficials

Beneficials can be exposed to pesticides in a number of ways. These include; direct contact with spray droplets during application, contact with spray residue on the plant or soil after application, and by the consumption of pesticide-contaminated prey.

Beneficials such as hoverflies and lacewings have a vital role in protecting beet and other nearby crops. Hoverfly larvae feed on aphids of all kinds while the adult is an important pollinator. Lacewings are broad spectrum predators, effective against pests including aphids and other soft bodied insects such as small caterpillars.

MAVRIK AQUAFLO has been getting it right where others have failed, effectively combatting Nysius and cutworm while avoiding harm to beneficial insects and users.



INSECTICIDE

Low toxicity thanks to unique chemistry

MAVRIK AQUAFLO (tau-fluvalinate) is a synthetic pyrethroid (SP) insecticide that is truly unique. Its chemistry differs significantly from other SPs in the market. **MAVRIK AQUAFLO** not only controls Nysius and cutworm, but also has low toxicity to beneficials such as pollinators, parasitoids, predators and fungal feeders.

Spiders and harvestmen are the notable exceptions (see fig. 1).

MAVRIK AQUAFLO is also the leading bee-safe SP insecticide. When applied during non-foraging periods, applications will not interfere with the activity of honey-bees once spray has dried.

Fig. 1: Impact of different insecticides on beneficials

IMPACT ON BENEFICIALS

High toxicity
Low toxicity

BENEFICIALS	OPs	Most synthetic pyrethroids	MAVRIK (Tau-fluvalinate)
Ground beetles			
Bees + wasps			
Spiders + harvestmen			
Lacewings			
Hoverflies			
Ladybirds			

How does MAVRIK AQUAFLO work?

MAVRIK AQUAFLO affects the nervous system of target insects after direct contact or ingestion. It also has a repellent effect. While these pests are overcome, the impact on key beneficial insects is minimal, allowing them to continue their good work as the crops develop.

How to apply Directions for use

APPLICATION RATE: 150 ML/HA

- Apply at crop seedling stage only.
- Apply at first sign of pest presence, ensuring good coverage of plants and surrounding soil.
- Repeat after 14 days if required.

MAVRIK AQUAFLO is crop safe when applied to beet seedlings at cotyledon stage in a tank-mixture with ADAMA beet herbicides and other commonly used pesticides.

High yielding beet with ADAMA's powerful, safe and flexible beet protection toolbox

ADAMA's extensive beet programme gives you the best possible protection for your beet crops right from the start.

In addition to **MAVRIK AQUAFLO**, ADAMA also has a specifically designed herbicide programme, comprising **GOLTIX® GOLD**, **GOLTIX WG HERBICIDE**, **TORERO™**, **ETHOSAT® HERBICIDE** and **RIFLE®**.

The herbicide programme builds on a robust pre-emergence spray with a follow up to control any subsequent weeds. This not only gives you highly effective weed control, but also more time in case of adverse weather effects and/or other unforeseen events.

Foliar fungicide **CUSTODIA®** completes the toolbox, supporting greener and healthier leaves along with greater grazing flexibility. **CUSTODIA** has a withholding period of only 28 days.

All products have been rigorously tested and refined to complement New Zealand growing conditions and are backed by robust trial results.

Want to know more?

Talk to your ADAMA representative to find out more on how to protect your beet crop with ADAMA.



Listen ▸ Learn ▸ Deliver

IMPORTANT

This brochure is not intended to replace the registered product labels. Always read labels carefully before using any product and follow label instructions.

For specialist advice in an EMERGENCY call 0800 734 607 (all hours).

Registered pursuant to the ACVM Act 1997. See www.foodsafety.govt.nz for registration conditions.

Approved pursuant to the HSNO Act 1996. See www.epa.govt.nz for approval controls.

Custodia, Ethosat, Goltix, Mavrik, Rifle and Torero are trademarks of an ADAMA Group Company.

ADAMA New Zealand Ltd., 1/93 Bolt Road, Tahunanui, Nelson, 7011, PO Box 1799, Nelson 7040, New Zealand
Head Office: 03 543 8275 nzinfo@adama.com www.adama.com