

# Zulu®

## Product Information

**Active ingredient:** 125 g/l (13.1% w/w) isopyrazam

**Formulation:** Emulsifiable Concentrate

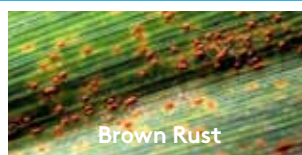
**Pack size:** 5 litres

**Water volume:** 100 - 400 L/ha

**Aquatic buffer zone:** 5 metres

**Spray quality:** Medium

**Targets:** Controls Net blotch, *Rhynchosporium secalis* (moderate), *Ramularia collo-cygni* and Brown rust on winter and spring barley



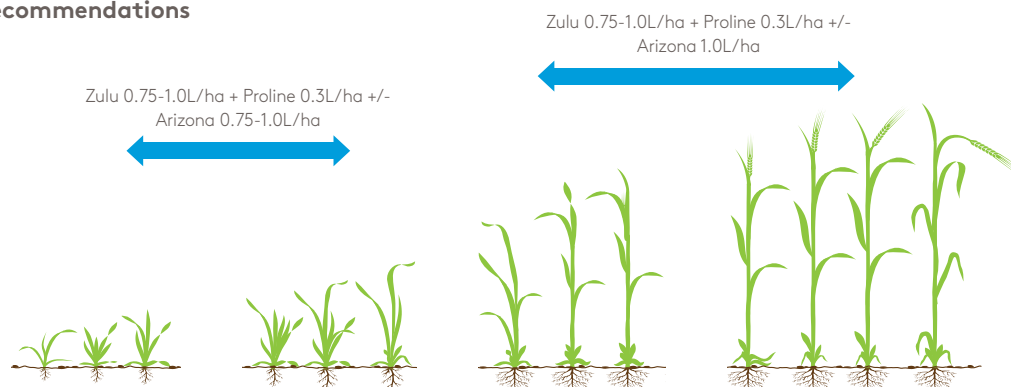
## Key Benefits

- Zulu® shows good crop safety and disease control which results in significant yield benefits
  - Zulu® is best used as a protectant treatment or in the earliest stages of disease development
  - Always use in mixture with another product, recommended for control of the same target disease
- that contains a fungicide from a different cross resistance group and is applied at a dose that will give robust control
- Zulu® can be used on all varieties of winter and spring barley

## Crop Information

Crop	Max Ind Dose	Max no. applications	Latest time of application
Winter & Spring Barley	1.0L	Two per crop	Before beginning of flowering: first anthers visible. (GS 61)

## Use recommendations



Spring 2018

Use plant protection products safely. Always read the label and product information before use.

For further product information, including warning phrases and symbols, refer to [www.adama.com/uk](http://www.adama.com/uk) or call The Technical Helpline on 01635 876 622.

Adama Agricultural Solutions UK Ltd. Unit 15, Thatcham Business Village, Colthrop Way, Thatcham, Berkshire RG19 4LW. Telephone 01635 860 555. UKenquiries@adama.com.