



ADAMA

BONTIMA®

A co-formulation of cyprodinil and isopyrazam for the control of a range of key diseases on barley.



Key Benefits

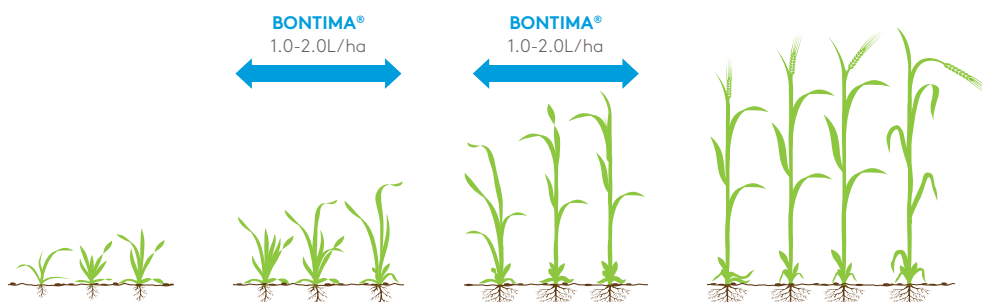
BONTIMA® preserves green leaf area to maximise yield and quality. Can be used on all varieties of winter and spring barley to deliver:

- Robust and long lasting protection against key diseases
- Extended green leaf area to maximise yield and quality
- Resistance management of key diseases with cyprodinil as a different mode of action
- Approved use on malting barley up to and including end ear emergence (GS59)

Crop Information

Cyprodinil component provides an alternative mode of action in programmes. Excellent performance as a stand-alone product, but offers flexibility to mix in prothioconazole in highly curative Rhynchosporium situations.

Crops	T1	T2
Winter barley	1.6L/ha BONTIMA® (or 1.2L/ha + 0.3L/ha Proline® in curative Rhyncho situations) + 0.75-1.0L/ha ARIZONA®	1.6L/ha BONTIMA® + 1.0L/ha ARIZONA®
Spring barley	1.4L/ha BONTIMA® (or 1.0L/ha + 0.3L/ha Proline® in curative Rhyncho situations) + 0.75-1.0L/ha ARIZONA®	1.4L/ha BONTIMA® + 1.0L/ha ARIZONA®



Product Information

Active ingredients:
62.5g/L isopyrazam
187.5g/L cyprodinil

Formulation:
Emulsifiable Concentrate

Pack size: 5 litres

Application Information

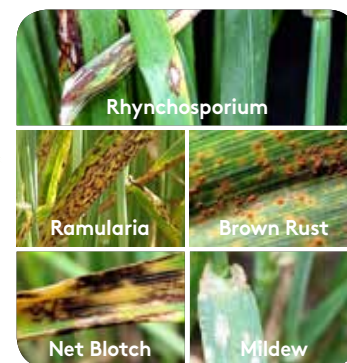
Water volume: 150-300L/ha

Spray quality: Medium

LERAP: B

Max. ind. dose: 2.0L/ha

Timing: Before beginning of flowering: first anthers visible (GS61)





BONTIMA® Tank Mixes

2-Way Mixes

The following tank mixes have been tested under continuous agitation for physical compatibility with BONTIMA® and will mix at recommended rates:

Fungicides

Amistar	Epic	Ignite	Phoenix	Vivid
Arizona	Fandango	Jaunt	Proline	
Brutus	Flexity	Mojave	Prosaro	
Colorado	Folicur	Opera	Talius	
Comet 200	Helix	Opus	Tracker**	

Herbicides

Agrozone	BiPlay SX	Duplosan KV	Harmony M SX	Ratio SX
Ally Max SX	Boxer	Eagle	Jubilee SX	Quantum SX
Barton WG	Chekker	Firebird	Lorate	Starane XL
Axial + Adigor	Chimera SX	Galaxy	Presite SX	

Insecticides

Hallmark with Zeon Technology	Permasect
Karate Wg	Sceptre

Plant Growth Regulators

Adjust	Cerone	K2	Moddus + Chlormequat
Canopy	Cleancrop Alatrín Evo	Moddus	Terpal

Trace Elements

Headland Copper	Nutrel SMART Manganese*	Yara Vita Liquid Manganese
Headland Magnor	Nutrel Master Manganese Plus*	Yara Vita Magflo 300
Headland Manganese 15%	Nutrel Master Magnesium + TE*	Yara Vita Magphos
Headland Super 80	Nutrel SMART ATS*	Yara Vita Mancozin
Headland Zinc	Nutri-Phite PGA	Yara Vita Mancuflo
Human Extra	Verdi-Crop 4 Yield Extra	Yara Vita Mantrac 500
Nutrel Maxman 400*	Yara Vita Bortrac	Yara Vita Sulphur F3000
Nutrel SMART MagiK Manganese*	Yara Vita Coptrel 500	Yara Vita Zintrac 700

ADAMA Agricultural Solutions UK Ltd will support the tank mixing of any of the above named trace elements with an existing 2-way tank mix including BONTIMA®. ADAMA Agricultural Solutions UK Ltd advise that the trace element part of the tank mix is added to the sprayer tank last with constant agitation and the mixture is sprayed without delay.

Incompatible Mixes

DO NOT tank mix with Yara Vita Croplift.

*All Nutrel trace elements are tested/supported by Nutrel.

**When BONTIMA is mixed with other SDHI's, the total dose must not exceed 100% of a single SDHI dose.