



Pummel™

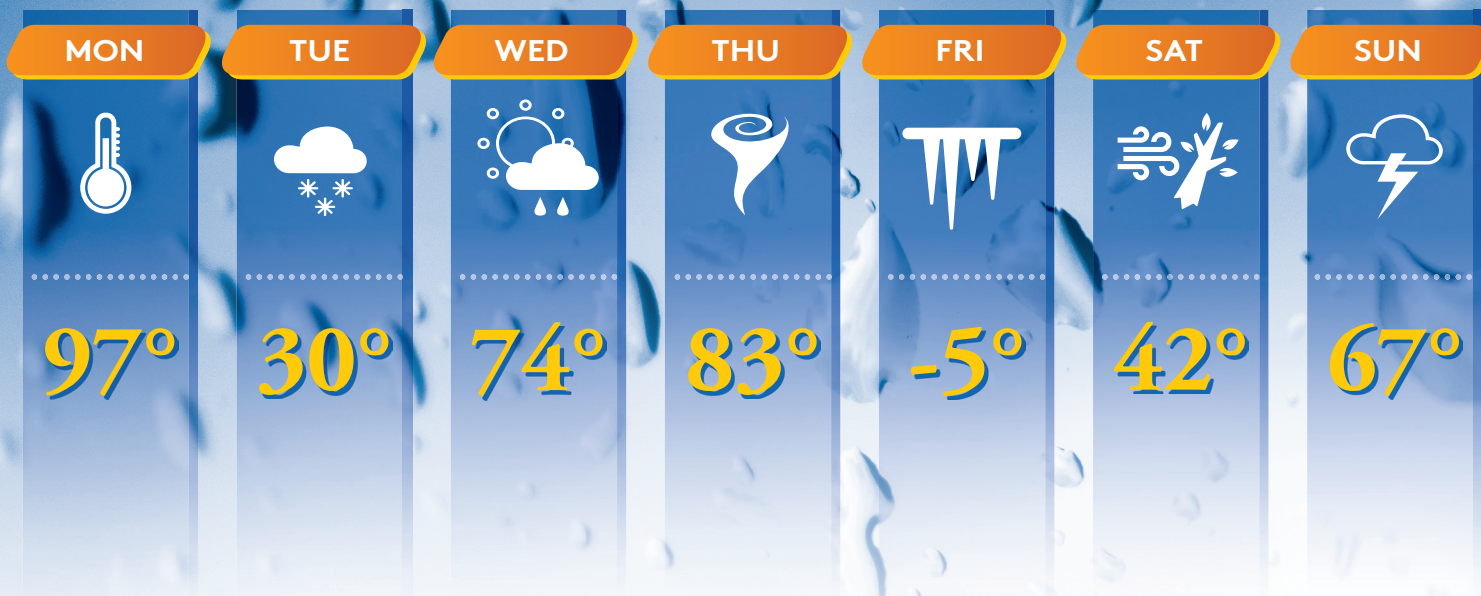
PUMMEL HERBICIDE PRODUCT BROCHURE

Weather or not...

You can always count on Pummel™ for weed control

Your 7 Day Forecast

ACCU-RANDOM GUESSTIMATE



Even through the most unpredictable conditions,
Pummel™ herbicide protects your soybeans.



Pummel™

PUMMEL HERBICIDE PRODUCT BROCHURE

Pummel™ herbicide is a unique pre-emergence liquid herbicide for use in soybeans that delivers an extensive spectrum of grass, sedge and broadleaf weed control, long residual activity and rotation flexibility.

Pummel was developed for midwest soybean growers to provide an alternative to the overused PPO chemistries in soybeans. Pummel provides superior control of grasses and small-seeded broadleaf weeds.

The most effective, non-PPO soybean herbicide



RESISTANCE MANAGEMENT

- Pre-emergence weed control using two different modes of action to control resistant weeds
- Extends post-emerge application window 45-60 days after planting



WHERE TO USE

- Excellent fit in the midwest where rotation to corn, beans, alfalfa and wheat are common
- Effective in all tillage systems
- May be applied early pre-plant through the V5 growth stage



KEY WEEDS CONTROLLED

- Pre-plant and pre-emergence control of sedges, more than 22 grasses and over 38 broadleaf weeds including lambsquarters, velvetleaf, morningglory, waterhemp, Palmer pigweed, nightshade and common/giant ragweed, including those resistant to glyphosate, HPPD, or triazine



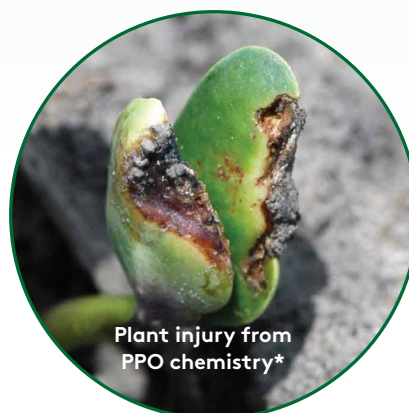
RESIDUAL ACTIVITY

- At full use rates, Pummel will provide 45 days of residual control



CROP SAFETY AND ROTATIONAL FLEXIBILITY

- Pummel provides superior crop safety versus overused PPO chemistry, in a proactive approach to weed resistance management
- Provides tank mix flexibility allowing the right tank mix partner for the situation at hand (such as tank mixing pre with Glory® herbicide, or post with Rumble® herbicide)



Plant injury from PPO chemistry*

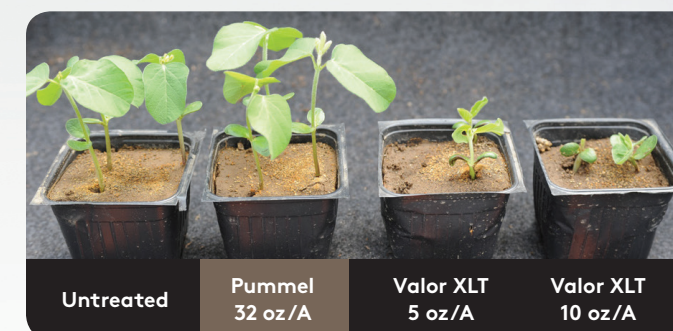
Pre-plant or Post-emerge:

Foundational application as a part of a planned two-pass residual weed control program

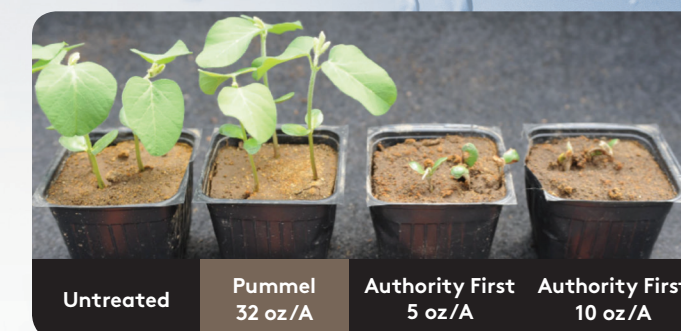
- Pummel may be applied in conventional, LibertyLink® or glyphosate-tolerant soybeans as a pre-plant or post-emerge application
- Flexibility to add metolachlor (Parallel® PCS) to the mixture at 0.4 pt/A if Pummel is applied 15 to 30 days prior to planting

Crop Safety

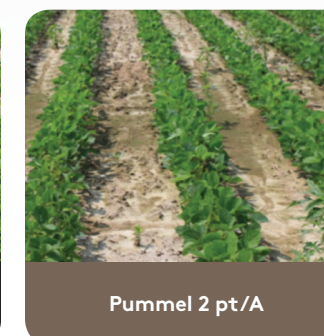
PUMMEL VS. VALOR® XLT: RAINFALL SPLASH



PUMMEL VS. AUTHORITY® FIRST RAINFALL: SUB-IRRIGATED



2013 Pre-emerge Trials (Sparta, IL)

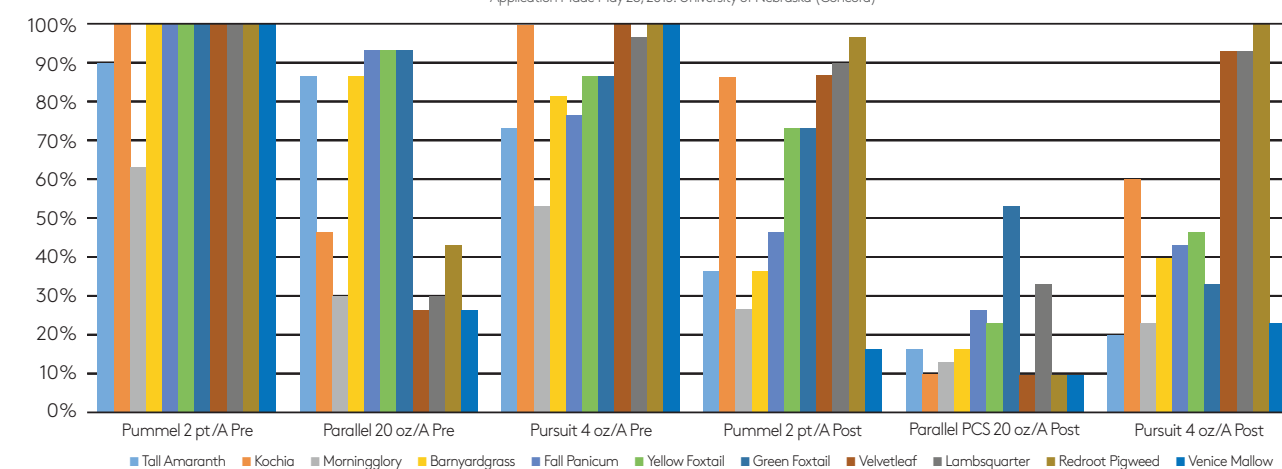


Application Instructions

- Pre-plant incorporated applications should be thoroughly incorporated to a depth of 1 to 2 inches
- Apply one application at 1.6 to 2 pt/A depending on soil type and organic matter, in a minimum of 20 gallons of water
- If sufficient rain does not occur before planting to surface applications of Pummel, shallow incorporation will enhance weed control

Weed Control 60 Days After Treatment

Application Made May 28, 2015, University of Nebraska (Concord)



Call 866-406-6262 or visit us online at adama.com



ADAMA: SIMPLY. GROW. TOGETHER.

Farming is complex and full of challenges. ADAMA works together with farmers, agronomists, distributors and the wider farming communities, to find ways to simplify it. We focus on ways to Simply. Grow. Together. Here's how:



SIMPLY.

Delivering our products and services as simply as possible is what drives ADAMA. We stand for creating simplicity in agriculture by helping customers, consumers and agriculture make better decisions, and work smarter with more transparency and trust.



GROW.

Through a no-nonsense approach ADAMA will grow by helping our customers grow their agricultural business. Growth is the ultimate benefit for farmers, whether it be yield growth, business growth or status growth.



TOGETHER.

ADAMA delivers industry-leading solutions to simplify grower challenges by working together with families, peers and the rest of farming.

ADAMA

Parallel is a Restricted Use Pesticide. Always read and follow label directions. Pummel™, Parallel®, Glory® and Rumble® are trademarks or registered trademarks of an ADAMA Group Company. LibertyLink® is a registered trademark of Bayer. Authority® is a registered trademark of FMC Corporation. Valor® is a registered trademark of Valent U.S.A. Corporation. ©2015 Makhteshim Agan of North America, Inc. d/b/a ADAMA.