



SQUADRON® II

This broad-spectrum herbicide is registered for grassy and broadleaf weed control in a wide range of crops, most notably lentils, peas, chickpeas and potatoes. It can work alone or in combination with recommended tank mixes.



GROUP 5

Active Ingredient:

75% Metribuzin = WDG

Application Rates and Acres Treated:

Pre-seed:

Rate: 150 – 190 g/ac

Acres Treated: 25 – 30 ac/bottle

Post-emergence:

Rate: 80 – 300 g/ac

Acres Treated: 15 – 65 ac/jug

Packaging:

4 x 5 kg jug

Rainfastness:

6 hours

KEY BENEFITS:

- Enhanced metribuzin formulation
- Increased solubility
- Less foaming
- Better compatibility with other herbicides, especially Roundup WeatherMAX®

REGISTERED CROPS:

Pre-seed:

- Field peas
- Lentils
- Potatoes (including sprinkler irrigation)

In-crop:

- Chickpeas
- Field peas
- Lentils
- Potatoes (including sprinkler irrigation)
- Processing peas
- Spring barley
- Spring wheat
- Winter wheat

SQUADRON® II

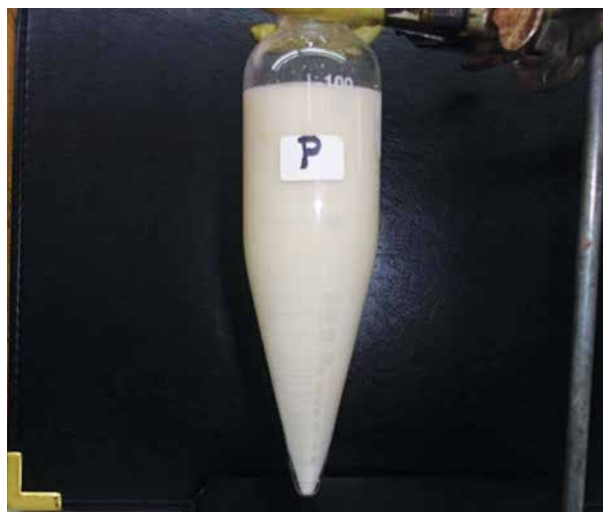
KEY WEEDS CONTROLLED:

- Annual bluegrass⁶
- Ball mustard^{3,7}
- Barnyard grass⁶
- Bromegrass⁶
- Common chickweed^{1,6,7}
- Common groundsel³
- Corn spurry³
- Cow cockle⁶
- Downy brome⁵
- Flixweed⁵
- Green foxtail⁶
- Green smartweed^{1,6,7}
- Goose grass⁶
- Hempnettle^{2,6,7}
- Kochia⁶
- Lady's thumb^{1,6,7}
- Lamb's quarters^{1,6}
- Night-flowering catchfly³
- Persian darnel⁶
- Redroot pigweed^{1,3,6}
- Russian thistle⁴
- Shepherd's purse^{5,6}
- Stinkweed^{1,6,7}
- Tartary buckwheat³
- Volunteer non-triazine-tolerant canola^{1,6,7}
- Wild buckwheat⁶
- Wild mustard^{1,6,7}
- Wild oats⁶
- Wormseed mustard³
- Yellow foxtail⁶

HOW IT WORKS:

Metribuzin inhibits the photosynthesis of grassy and broadleaf weeds. Used pre-emergent, susceptible weeds and crop seedlings emerge through treated soil, but 2–5 days later the weeds show chlorosis and necrosis. Plants treated post-emergent show chlorosis and necrosis between leaf veins, followed by wilting and death.

SQUADRON® II is the same concentration as our original formulation, but with a new production method; it has a smaller particle size (averaging 4 microns), which disperses more rapidly and at rest stays suspended longer than the original metribuzin formulation (average particle size of 6 microns).



Pan granulated SQUADRON® II formulation in solution one hour after mixing – much better solubility



Extruded formulation of metribuzin in solution one hour after mixing

¹ Control at 80 g/ac post-emergence. | ² Suppression at 80 g/ac post-emergence. | ³ Control at 110 g/ac post-emergence.

⁴ Control at 150 g/ac post-emergence. | ⁵ Control at 225–300 g/ac post-emergence. | ⁶ Pre-seed incorporated with Treflan® EC or Rival® herbicide.

⁷ Suppression only in chickpeas and lentils as post-emergence application.



SUPPORTED TANK MIXES:

Spring wheat and spring barley (post-emergent):

- MCPA amine
- Banvel® II
- Target® Liquid
- 2,4-D amine
- Dicamba

Field peas (post-emergent):

- MCPA sodium salt
- PHANTOM® 240 SL
- Venture® L

Lentils and field peas (pre-seed incorporated):

- Treflan® EC
- Frontier®
- Trifluralin
- Dual II Magnum®
- Linuron

Potatoes (pre-seed incorporated and pre-emergence through irrigation system):

- Eptam® Liquid EC
- Glyphosate

SOIL TYPES AND RESTRICTIONS:

The recommended use rates of SQUADRON® II are dependent upon soil texture and the organic matter content of the soil being treated: coarse, medium and fine.

The following chart outlines the soil textures included in each of the soil texture groupings:

Coarse	Medium	Fine
Loamy sand, Sandy loam	Loam, Silt loam, Silt, Sandy clay loam, Sandy clay	Silty clay loam, Silty clay, Clay loam, Clay

- On variable soils with coarse sandy areas, some crop injury may occur on the sandy areas if the rate used is for the finer soil type.
- Sandy loam and silty clay loam soils are transitional soils and may be classified as medium-textured soils in some regions.
- Do not use this product on muck soils. If SQUADRON® II is applied to muck soils, subsequent crops may be injured.
- Do not use on coarse soils with less than 2% organic matter.



Always read and follow label directions.

SQUADRON® II

APPLICATION TIMING AND CROP STAGING:

Crop	Crop Stage	Application Method
Barley	2 – 5 leaf	Post-emergence
Wheat	2 – 5 leaf	Post-emergence
Peas	Pea vines must be less than 6 inches long at time of post-emergent application.	Post-emergence or pre-seed incorporated (spring and fall)
Chickpeas	1 – 3 above ground nodes	Post-emergence
Lentils	Vines must be less than 6 inches long or in 3 – 5 node stage.	Post-emergence or pre-seed incorporation (fall)
Soybeans	Before seeding	Pre-seed incorporation (spring)
Potatoes	First use on a potato variety should be limited to a small test area to ensure varietal tolerance.	Post-emergence or pre-seed incorporated. Refer to the label for sprinkler irrigation application.

CROP ROTATIONS:

Rotational crops such as non-triazine-tolerant canola (rapeseed) are sensitive to SQUADRON® II and may be injured if seeded in soil treated with SQUADRON® II during the year of application or the following crop year.

Fall seeded or cover crops such as wheat, oats and rye may be injured when seeded within the same season as the application of SQUADRON® II.

GRAZING:

- Do not graze treated wheat or barley for 30 days after application.
- Do not graze peas, chickpeas or lentils for 70 days after application.



ADAMA

Always read and follow label directions.
Toll-free: 1.855.264.6262
Website: ADAMA.COM

SQUADRON® and PHANTOM® are registered trademarks of ADAMA Agricultural Solutions Canada Ltd. All other products are trademarks of their respective companies. © 2023 ADAMA Agricultural Solutions Canada Ltd.